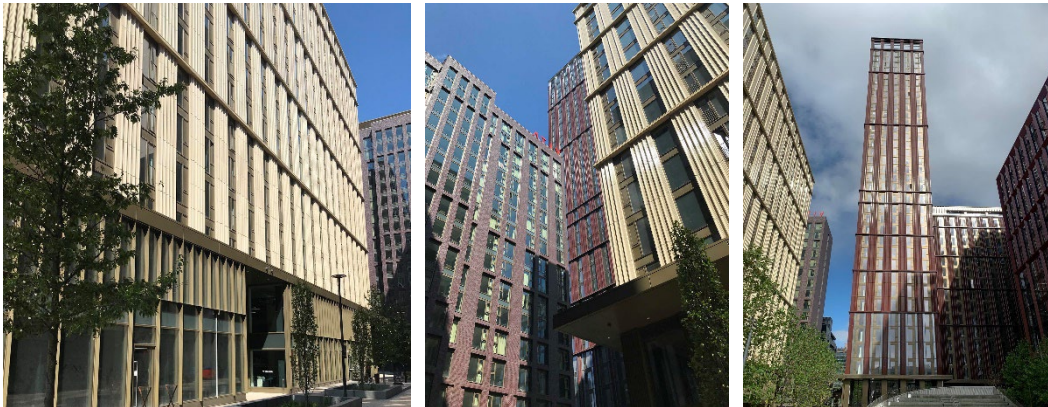


## PROJECT NEWS



## SHAPING A COLLABORATIVE COMMUNITY

### VISION

Circle Square is an exciting new neighbourhood located on the former BBC site in the heart of Manchester city centre. Designed by FCB Studios, this pioneering new destination boasts over 1700 new homes, more than 1.2 million square feet of offices, two hotels and 100,000 square feet of retail and leisure space situated around the green space of Symphony Park.

Working in partnership with Main Contractor John Sisk and Sons, Kawneer products were specified for Buildings 5, 6, 7 and 8. Multiple façade options were considered for the external envelope, but it was Kawneer's market leading AA<sup>®</sup>110 Curtain Wall system with its market leading +/- 15mm building movement joint innovation that provided the ultimate combination of aesthetics and performance. Collaboration was key and the configuration of the buildings provide the flexibility for businesses of all shapes and sizes to develop and grow in an enterprise-focused environment which celebrates business and compliments community.

### TRANSFORMATION

Installed by Kawneer's approved specialist subcontractor FK Group, the £25.3 million project was the first to use Kawneer's newly enhanced AA<sup>®</sup>110 Curtain Wall system that features a bespoke expansion joint, which allows a building movement tolerance of +/- 15 mm. Creating a sense of scale and vibrancy, the white profiled terracotta ceramic façades contrast the earthy tones of the perimeter buildings in a modern interpretation of the grand Victorian warehouses nearby.

The high-performance Curtain Wall was accompanied by AA<sup>®</sup>720 Side Hung Open-In Windows to deliver a high level of thermal performance throughout. Using passive principles, the high insulation building fabric coupled with solar control glazing, address the energy requirements for heating and cooling.

## REALISATION

Surrounded by leading institutions in art, dance, culture, science and technology, Circle Square has already attracted global brands and pioneering businesses, providing them with the perfect home to communicate and collaborate in dedicated coworking areas and studios.

Manchester's innovative new neighbourhood also accommodates private residents and students in exceptional high-rise living spaces. While two pavilion buildings located at either end of the central green offer a selection of shops, restaurants, cafés and bars to breathe energy and life into the Oxford Road corridor.

## ENDS

For further information, please contact:

Jane Ashley @ Kawneer

T 01928 502500

E [jane.ashley@arconic.com](mailto:jane.ashley@arconic.com)